



Pennacook Area Community Trails Emergency Access Information

799 Hancock Street Rumford, Maine
Mountain Valley High School

Trails and open space for hiking, mountain biking and snowshoeing
Open year round, winter use allowed.
Interior Road Access: Limited

Property Overview: PACT is a 5 mile network of trails originating from Mountain Valley High School and utilizing Rumford Water District land. It is open year round for mountain biking, hiking and snowshoeing.

Main Access: The main access point is in the secondary, north parking lot (not the main entrance) of the High School. The trail begins at the north west corner of the parking lot, and enters the woods near the ropes course.

Schedule: There is no gate at the network and it is accessible from dawn to dusk.

Additional Information: It is possible to access the trail from the main parking lot, around the West side of the school, beyond the bus parking area. The ATV and Snowmobile trail (High School Trail) are on the edge of the woods behind the high school. For access to the southern terminus of Bull Pine Trail use Pump House Road and the edge of the field near Scotty Brook.

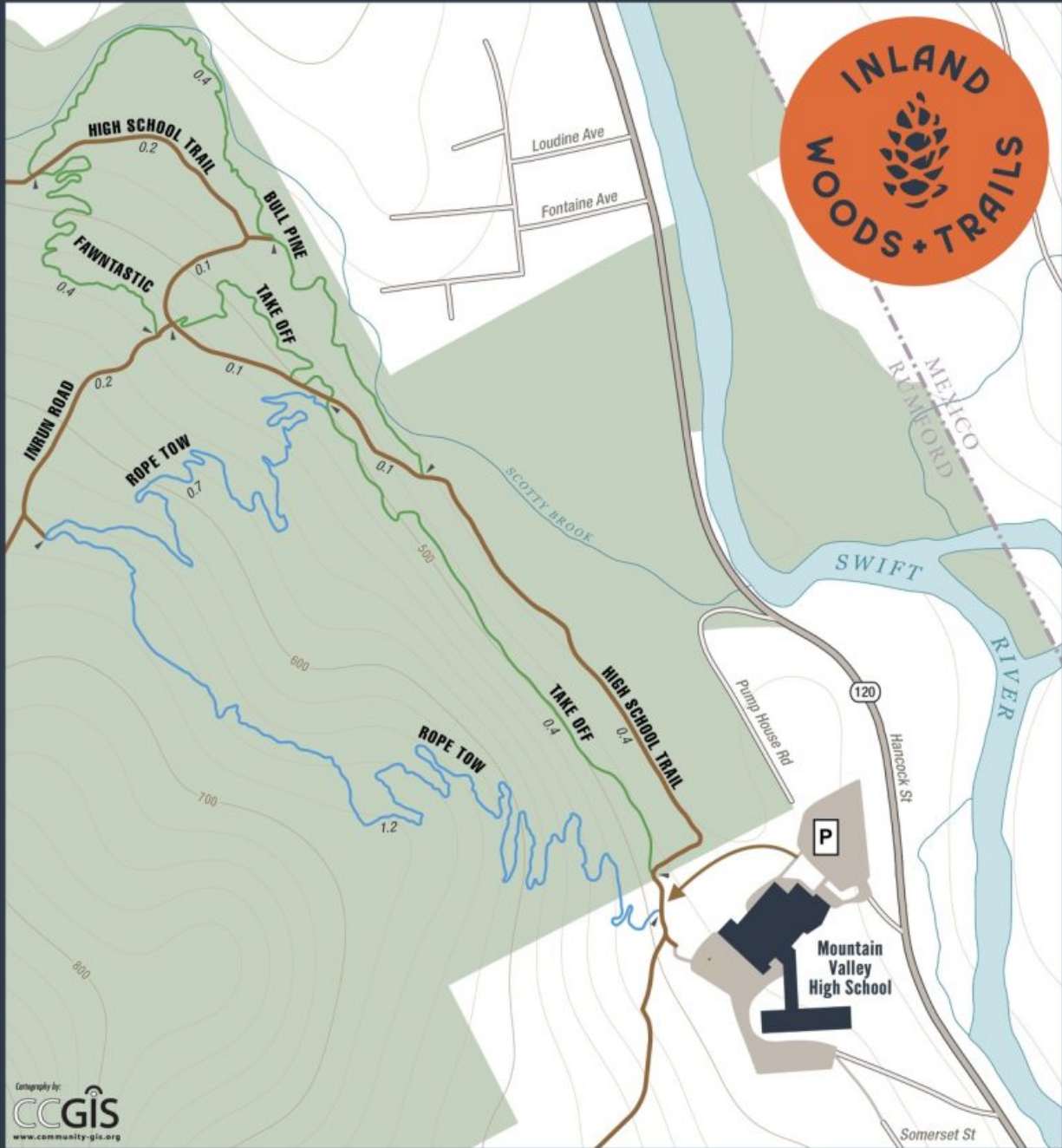
Interior Road Access:

- Pumphouse Road- this travels through a grassy area, about a $\frac{1}{3}$ of a mile to the end of the Bull Pine trail. The road then travels up a very steep hill, which should not be used for access.
- High School Trail is an ATV and Snowmobile trail- this has frequent mud puddles but travels through the middle of the property accessing many of the bike trails.
- Inrun Road- this travels to the midway point of the Rope Tow, it is steep and frequently muddy.

Coordinates of significant landmarks

- Trail map and kiosk located on High School Trail at the start of Rope Tow trail, near the school: 44.56476, -70.56129
- Junction of Take off, High School Trail, In run, and Fawntastic trails (large log landing): 44.57060, -70.56784

Pennacook Area Community Trails



Cartography by:
CCGIS
www.community-gis.org



**SINGLETRACK
BIKE TRAILS**

**DOUBLETRACK
SHARED-USE TRAILS**

- Trail - Easy; Distance in Miles
- Trail - Intermediate
- Trail (ATVs and Snowmobiles may be present at any time)

0 Miles 0.1

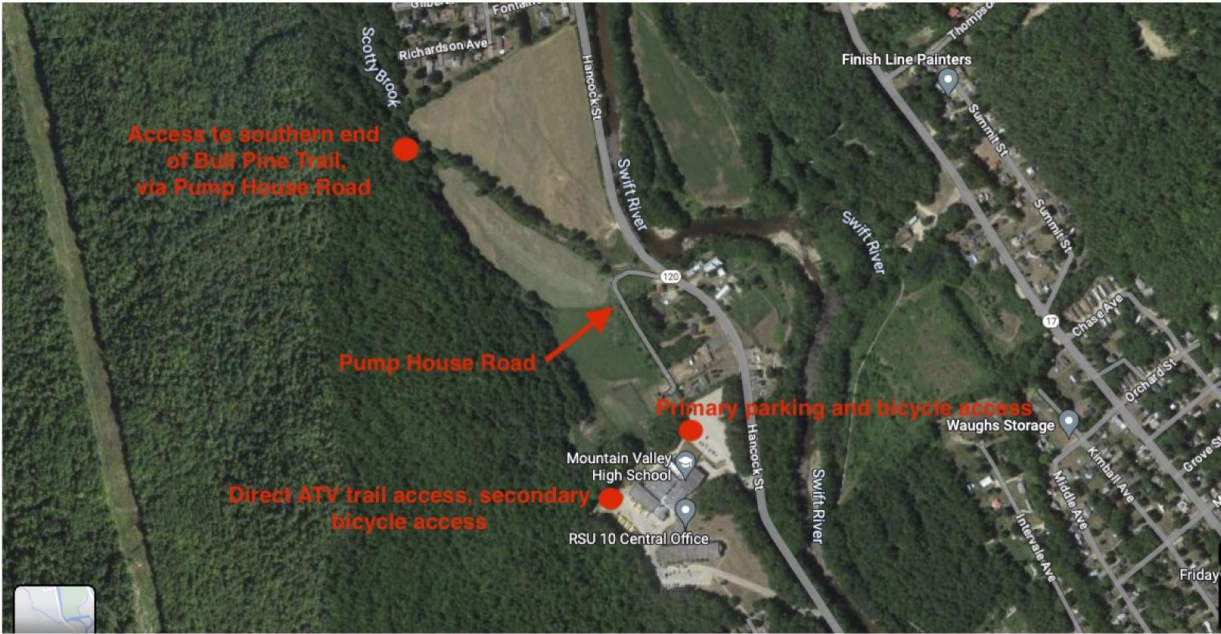
Contour interval: 20 ft
August 2022

woodsandtrails.org • 207.200.8240



**RISE WITH
GRATITUDE**





Access to southern end of Bull Pine Trail, via Pump House Road

Pump House Road

Direct ATV trail access, secondary bicycle access

Primary parking and bicycle access