



## Bethel Community Forest Emergency Access Information

121 Locke Mountain Road Bethel, Maine 04217

Trails and open space for hiking, mountain biking, hunting, skiing, snowshoeing  
Road access ~May 1 to November 1. Winter use allowed, gated and unplowed after Nov.1  
Interior road access: Yes, limited.

**Property Overview:** The Bethel Community Forest is 987 acres located northeast of the North Road 3 miles from the village of Bethel. It features about 15 miles of trails and is used year round by hikers, mountain bikers, skiers, snowshoers and hunters.

**Main Access:** The main access point is a large gravel lot at the end of the Locke Mountain Road (dirt), approximately .3 miles down the Daisy Bryant Road off of the North Road. This is where the trails originate from.

**Schedule:** There is a gate at the base of the Locke Mountain Road that is unlocked 24/7 from when the trails open in the spring (weather dependent ~May 1st) to November 1st. Inland Woods + Trails holds the key to the gate. The Mountain Bike trails are closed starting November 1st and the property is open for hiking and hunting (walk in access) through Thanksgiving. The trails may be used in the winter after hunting season and then will close during "mud season" in the spring before reopening for summer use. In Winter the Greenstock Snowmobile club and Wild River Riders maintain snowmobile trails through the property.

### **Additional Information:**

- With the increase of backcountry skiing in our area, it is possible the base of the Locke Mountain Road may become a popular entry point for winter recreationalists.
- There is a 2nd entrance to the Bethel Community Forest, .2 mile past Coleman Concrete on the North Road. This entrance leads to a gravel lot which will be open in winter 2022-2023 as a park and ride snowmobile trail access point. There is signage marking both this entrance and the main entrance on the Locke Mountain Road.
- The Bingham Forest (owned by the Town of Bethel) and the Bethel Water District are adjacent to the Bethel Community Forest and are part of this trail network; all managed by Inland Woods + Trails. These parcels are included on the Bethel Community Forest map.
- The property line is inconsistently marked with orange blazes and does not follow a trail. The hiking trails follow blue blazes.

**Interior Road Access:** There is a series of dirt roads beyond the main lot accessible by authorized vehicles that provide access to higher points on the property. See the following map. A vehicle with high clearance and a knowledgeable driver and/or passenger is needed for travel past the parking area.

The Summit Access Road travels for 1.3 miles from the parking area up to the start of the Parietal bike trail. It crosses the Summit Ridge hiking trail after 1 mile (1.2 miles along the hiking trail). The Old County Road leaves the Summit Access Road on the right after .22 miles and traverses to the western

boundary of the property and dead ends at 1 mile. The Knoll Road leaves the Summit Access Road on the left after .31 miles and travels to Picnic Knoll. Wolf Oak Road leaves the Summit Access Road after .2 miles, this is a newly reopened woods road that will be actively used for logging in the winter from 2023 onwards.

There is additional emergency road access to the intersection of Ghost and the Boundary Brook Road from the end of the Daisy Bryant Road. There are two gates .8 miles past the Locke Mountain Road on the Daisy Bryant Road. The Bethel Water District holds the combination to one gate and private landowners hold the other combination. This entry should be considered a last resort due to disputes with neighboring landowners. The field at the intersection with Ghost and the Boundary Brook Road is .3 miles past the gate.

### **Coordinates for significant points in the network:**

- Parking area: 44.43609, -70.83934
- Picnic Knoll: 44.44030, -70.84709
- 1 mile on Summit Access Road, Summit Ridge Trail trail crossing (1.2 miles along SRT): 44.44404, -70.84314
- West Ledge: 44.44525, -70.84058
- Ridgetop View: 44.44797, -70.83871
- Wolf Oak Road/ Summit Access road junction: 44.43824, -70.84025

### **Trail Signs**

Each property has wooden signs at trail heads, trail junctions, and viewpoints. Most signs have a number on the back upper corner to help locate individuals if they call for help.

The following are the sign wayfinding numbers for this network:

<b>Sign Number</b>	<b>Sign Location</b>	<b>Sign Text</b>
BCF-1	BCF parking lot (trailhead at eastern corner)	Trails
BCF-2	BCF parking lot (where a gate blocks the beginning of the Summit Access Road on the western corner)	Summit Access Road
BCF-3	Intersection of Tribute beginning and end, and Summit Ridge Trail (.05 from parking lot)	Summit Ridge Trail- Picnic Knoll 0.7 mi. Bingham Cascades Trail 0.8 mi. West Ledge 1.4 mi. Whitecap Cliffs Trail 1.7 mi
BCF-4	Intersection of Tribute beginning and end, and Summit Ridge Trail (.05 from parking lot)	Tribute <--
BCF-5	Intersection of Tribute beginning and end, and Summit Ridge Trail (.05 from parking lot)	One Way <--
BCF-6	Intersection of Tribute beginning and end, and Summit Ridge Trail (.05 from parking lot)	One Way Traffic Do Not Enter
BCF-7	Where the Summit Ridge Trail, Flux, Wolf Oak Road and the Summit Access Road meet	Summit Ridge Trail to parking lot // One way do not enter

BCF-8	Where the Summit Ridge Trail, Flux, Wolf Oak Road and the Summit Access Road meet	^ Summit Ridge Trail .
BCF-9	Where the Summit Ridge Trail, Flux, Wolf Oak Road and the Summit Access Road meet	Flux <--
BCF-10	Where the Summit Ridge Trail, Flux, Wolf Oak Road and the Summit Access Road meet	Summit Access Road <->
BCF-11	Where the Summit Ridge Trail, Flux, Wolf Oak Road and the Summit Access Road meet	-> Tribute
BCF-12	Where the Summit Ridge Trail, Flux, Wolf Oak Road and the Summit Access Road meet	Summit Access Road <-^.
BCF-13	Where the Summit Ridge Trail, Flux, Wolf Oak Road and the Summit Access Road meet	To Tribute <. To Parking lot ^.
BCF-14	Tribute entrance off of Summit Access Road	-> Tribute . One Way
BCF-15	Tribute entrance just off of Summit Access Road	One Way Traffic Begins ->
BCF-16	Road intersection with Summit Access Road and Old County Road	Summit Access Road <->
BCF-17	Road intersection with Summit Access Road and Old County Road	Old County Road ^ Dead End 1 mi
BCF-18	Road intersection with Summit Access Road and Knoll Road	One Way Traffic Do Not Enter
BCF-19	1 mile on the Summit Access Road	Summit Ridge Trail ^ . West Ledge 0.2 mi. Whitecap Cliffs Trail 0.5 mi.
BCF-20	1 mile on the Summit Access Road	Summit Ridge Trail -> Bingham Cascades Trail 0.3 mi. Picnic Knoll 0.4 mi. Parking lot 1.2 mi.
BCF-21	1 mile on the Summit Access Road	Summit Access Road ^ parking lot 1 mi
BCF-22	1 mile on the Summit Access Road	Summit Access Road ->
BCF-23	1 mile on the Summit Access Road	To Humerus, Parietal and Maxilla ->
BCF-24	Humerus entrance off of Summit Access Road	^To Parietal and Maxilla
BCF-25	Humerus entrance off of Summit Access Road	Humerus ->
BCF-26	Humerus entrance off of Summit Access Road	Summit Access Road <->
BCF-27	End of Summit Access road, entrance to Parietal	--> Trails
BCF-28	End of Summit Access road, entrance to Parietal	Two way traffic.
BCF-30	End of Summit Access road, entrance to Parietal	Parietal -> To Maxilla ->

BCF-31	Bike intersection with Flux and Limbo	Limbo ->
BCF-32	Bike intersection with Flux and Limbo	<-> Flux
BCF-33	Bike intersection with Ghost and Flux	Flux ^
BCF-34	Bike intersection with Ghost and Flux	<-> Ghost
BCF-35	Bike intersection with Ghost and Phoenix	Ghost <->
BCF-36	Bike intersection with Ghost and Phoenix	Ghost->
BCF-37	Bike intersection with Ghost and Phoenix	Phoenix<-
BCF-39	Bike intersection with Ghost and Phoenix	Ghost<-
BCF-40	Bike intersection with Ghost and Phoenix	Ghost <-
BCF-41	Bike intersection with Ghost and Phoenix	^ Phoenix
BCF-42	Boundary Brook Road enters Ghost/Phoenix junction	Boundary Brook Road ->
BCF-43	Boundary Brook Road enters Ghost/Phoenix junction	< To Ghost and Phoenix
BCF-45	Bike Intersection with Phoenix and Limbo	Limbo^
BCF-46	Bike Intersection with Phoenix and Limbo	Phoenix->
BCF-47	Bike Intersection with Phoenix and Limbo	Limbo->
BCF-48	Bike Intersection with Phoenix and Limbo	<- Phoenix
BCF-51	Snowmobile Bridge .1 miles from Phoenix/Boundary Brook intersection	Boundary Brook Road <-
BCF-52	Snowmobile Bridge .1 miles from Phoenix/Boundary Brook intersection	To Phoenix and Limbo ->
BCF-53	Phoenix and Summit Ridge Trail crossing at Picnic Knoll	Phoenix <->
BCF-54	Picnic Knoll	Picnic Knoll
BCF-55	Phoenix and Summit Ridge Trail crossing at Picnic Knoll	Summit Ridge Trail <-->
BCF-56	Knoll Road and Phoenix crossing	Phoenix <-->
BCF-57	Knoll Road and Phoenix crossing	Knoll Road ^
BCF-58	Phoenix exit onto Summit Access Road/CATS	Community Access Trail ^
BCF-59	Phoenix exit onto Summit Access Road/CATS	Summit Access Road <->
BCF-60	Phoenix exit onto Summit Access Road/CATS	<- Phoenix
BCF-61	Junction of Bingham Cascades Trail and Summit Ridge Trail	Bingham Cascades Trail Start of Loop 1.7 mi. <- Return To This Point 5.3 mi.
BCF-62	Junction of Bingham Cascades Trail and Summit Ridge Trail	Summit Ridge Trail ^ Picnic Knoll 0.1 mi. Parking lot 0.8 mi.
BCF-63	Junction of Bingham Cascades Trail and Summit Ridge Trail	^ Summit Ridge Trail . West Ledge 0.6 mi. Whitecap Cliffs Trail 0.9 mi.
BCF-64	Humerus and Summit Ridge Trail crossing	Summit Ridge Trail <-->
BCF-65	Humerus and Summit Ridge Trail crossing	^ Humerus
BCF-66	Junction of White Cap Cliffs Trail and Summit Ridge Trail (at the Ridgetop View)	Whitecap Cliffs Trail -> White Cap Summit 1.8 mi

BCF-67	Junction of White Cap Cliffs Trail and Summit Ridge Trail (at the Ridgetop View)	Ridgetop View (end of Summit Ridge Trail) <- 70 feet.
BCF-68	Junction of White Cap Cliffs Trail and Summit Ridge Trail (at the Ridgetop View)	^ Summit Ridge Trail. Bingham Cascades Trail 0.9 mi. Picnic Knoll 1 mi. Parking Lot 1.7 mi
BCF-69	West Ledge	West Ledge
BCF-70	Junction of Humerus and Old County Road	To Summit Access Road 0.4 mi -->. Dead End 0.6 mi <-
BCF-71	Junction of Humerus and Old County Road	One Way Traffic Do Not Enter
BCF-72	Junction of Humerus and Old County Road	<--> Old County Road
BCF-73	.7 miles down Old County Road at road split	Old County Road Dead End 0.3 mi
BCF-74	End of Old County Road at BCF property line	Property Line; Turn around here
BCF-75	CATS Pathway, .4 from Summit Access Road	Community Forest Restoration Project
BCF-76	CATS Pathway, .5 from Summit Access Road	Community Forest Restoration Project
BCF-77	Parietal ends and Maxilla begins	Two Way Traffic
BCF-78	Parietal ends and Maxilla begins	Start One Way Traffic
BCF-79	Parietal ends and Maxilla begins	Maxilla ^
BCF-80	Parietal ends and Maxilla begins	^ Parietal
BCF-81	Maxilla ends on Humerus	One Way Traffic Begins
BCF-82	Maxilla ends on Humerus	One Way Traffic Do Not Enter
BCF-83	Maxilla ends on Humerus	-> To Summit Access Road
BCF-84	Maxilla ends on Humerus	<--> Humerus
BCF-85	Bingham Cascades Loop beginning	Cascades Loop <-Chapman Cascade 0.4 mi. <- Upper Cascades 0.6 mi. <- Library Cascade 0.8 mi. Return To This Point 1.1 mi.
BCF-86	Bingham Cascades Loop beginning	^ Bingham Cascades Trail Summit Ridge Trail 1.7 mi.
BCF-87	Chapman Cascade Spur entrance	Chapman Cascade 0.1 miles ^
BCF-88	Chapman Cascade Spur entrance	Cascades Loop <--
BCF-89	Chapman Cascade Spur entrance	Cascades Loop -->
BCF-90	Chapman Cascade	Chapman Cascade. High pool <-. Low Pool ->
BCF-91	Upper Cascades Spur entrance	Upper Cascades 0.4 ^
BCF-92	Upper Cascades Spur entrance	Cascades Loop <-->
BCF-93	End of Upper Cascades spur	Trail ends @ last Cascade 60 ft ^
BCF-94	Library Cascade Spur entrance	Library Cascade 200 feet ^
BCF-95	Library Cascade Spur entrance	Cascades Loop <-->
BCF-96	Library Cascade	Library Cascade

## **Bethel Community Forest Maps**



# Bethel Community Forest: Biking



**BIKE TRAILS**

- 1.0 Trail - Easy; Distance in Miles
- Trail - Intermediate
- Trail - Difficult
- Community Access Trail
- Singletrack / Doubletrack (managed for multiple uses)



**FOOT TRAFFIC ONLY TRAILS**

*\*Trails under construction have unpredictable opening times; check our website and social media for updates.*

0 Miles 0.25

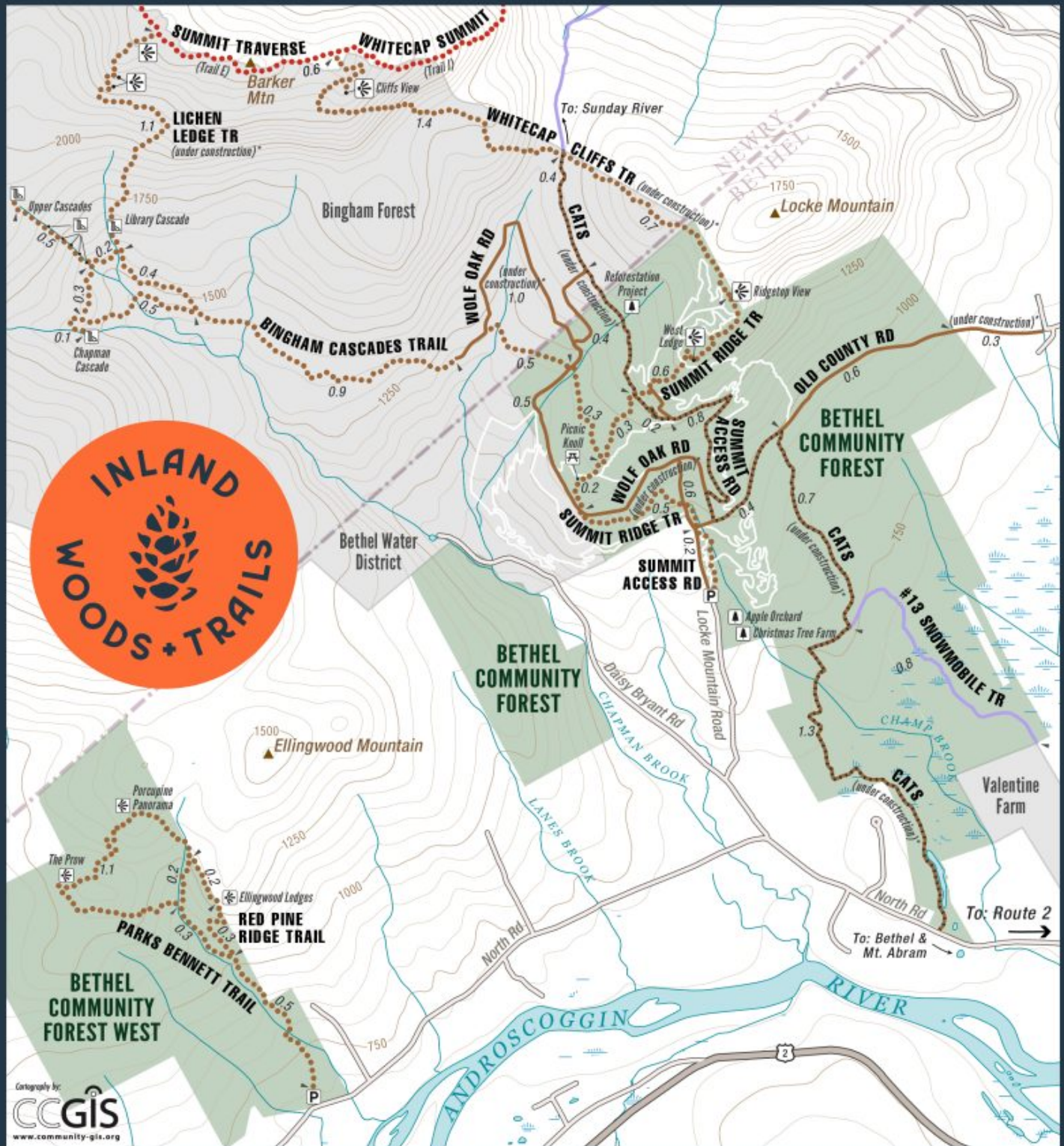
Contour interval: 50 ft  
September 2022

[woodsandtrails.org](http://woodsandtrails.org) • 207.200.8240





# Bethel Community Forest: Hiking



## FOOT TRAFFIC TRAILS

- Hiking Trail
- Sunday River Resort Summer Hiking Trail

## MULTI-USE TRAILS

- Bicycle
- Hiking

1.0 Trail; Distance in Miles

- Community Access Trail
- Snowmobile Trail (Winter Use Only)

\*Trails under construction have unpredictable opening times; check our website and social media for updates.

## BIKE TRAILS

- Bike Trail
- 0 Miles 0.25
- Contour interval: 50 ft
- September 2022

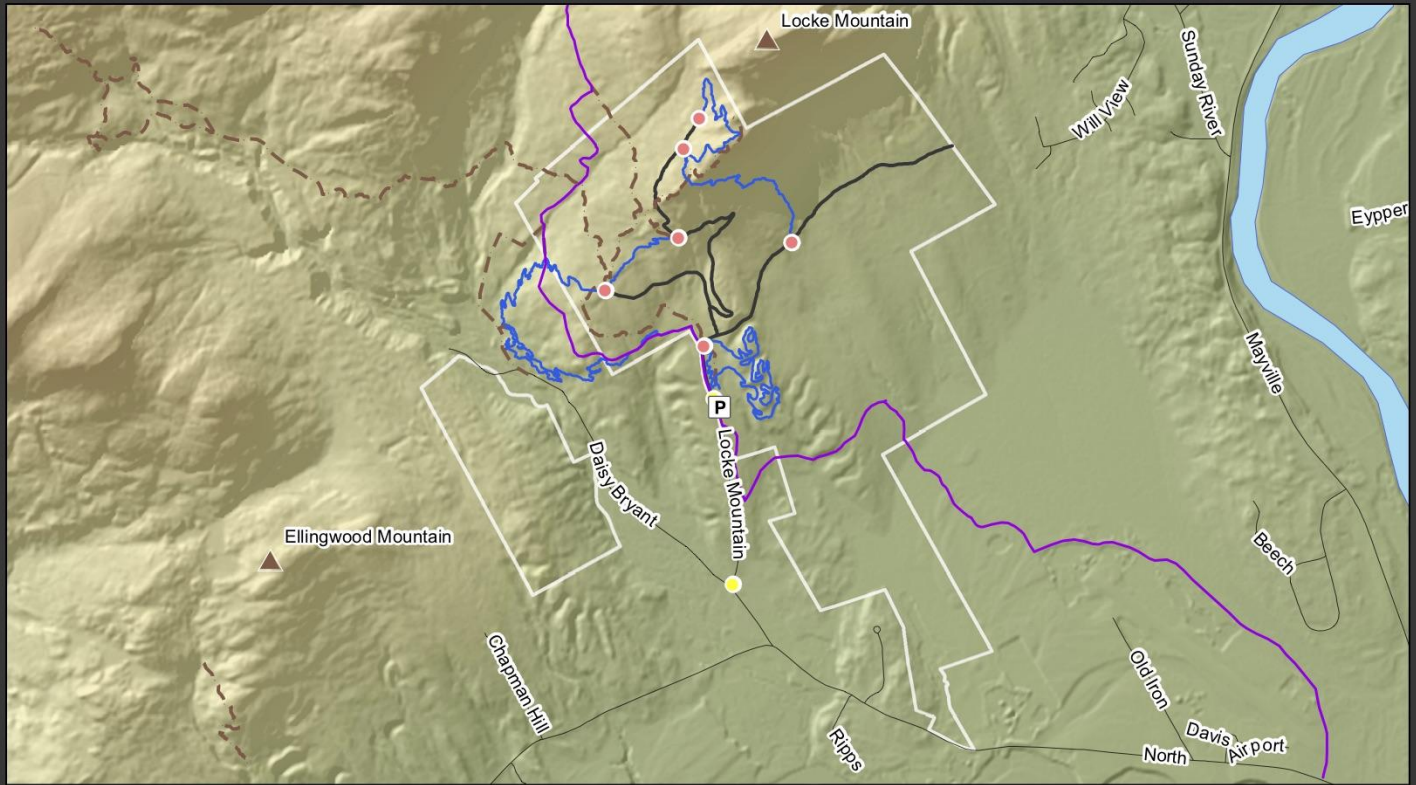
## WOODS+TRAILS

- Ride with Gratitude
- Borderlands Trail System

[woodsandtrails.org](http://woodsandtrails.org) • 207.200.8240



# Community Forest Emergency Access Map



— Snowmobile Trail  
— Access Routes



Parking



Extraction Point



Gate



1

Miles

[woodsandtrails.org](http://woodsandtrails.org)  
207.200.8240