



## **Mystery Mountain Emergency Access Information**

1782 US Route 2, Rumford Point, Maine

Trails and open space for hiking, hunting, skiing, snowshoeing  
Road access ~May 1 to November 1. Winter use allowed, sporadically plowed after November 1  
Interior Road Access: Yes, limited

**Property Overview:** The Rumford Point-Mystery Mountain parcel is about 70 acres on the north side of Route 2 at the west edge of the Rumford Point village. It features 2 miles of trails and is used year round by hikers, skiers, snowshoers and hunters.

**Main Access:** The main access point is a large sand and gravel lot up a short dirt driveway off of Route 2. There is a sign visible from the road. The driveway is .2 miles from the junction with Route 232 if heading from Rumford and .1 miles from Martin Road if headed from Bethel. The driveway is immediately next to the house with #1784. This is where the trails originate from.

**Schedule:** There is no gate at this lot and the property is accessible 24/7. The trails are closed starting November 1st and the property is then open for hunting by permission only. The lot is plowed sporadically in the winter. The trails may be used in the winter after hunting season and then will close during "mud season" in the spring before reopening for summer use.

**Additional Information:** The property boundary is marked with red blazes and does not follow a trail. The established trails are marked with blue blazes.

**Interior Road Access:** There is a dirt road, the Sweet Fern Road, beyond the east side of the lot that is accessible by authorized vehicles that provides access to higher points on the property. See the following map. A high clearance vehicle and knowledgeable driver is needed for travel past the parking area. The Sweet Fern Road travels east and then swings back west to transect a large grassy field and then staying to the left, it travels uphill to intersect the main hiking trail after .48 miles (.3 miles along the hiking trail) and is not passable after this point. The last 1000 feet up to the trail crossing may not be passable in all seasons.

### **Coordinates for significant points in the network:**

- Parking area: 44.50448, -70.67244
- Grassy field: 44.50583, -70.66919
- Road crossing: (.3 miles along hiking trail, .48 miles along road) 44.50652, -70.66871

## Trail Signs

Each property has wooden signs at trail heads, trail junctions, and viewpoints. Most signs have a number on the back upper corner to help locate individuals if they call for help.

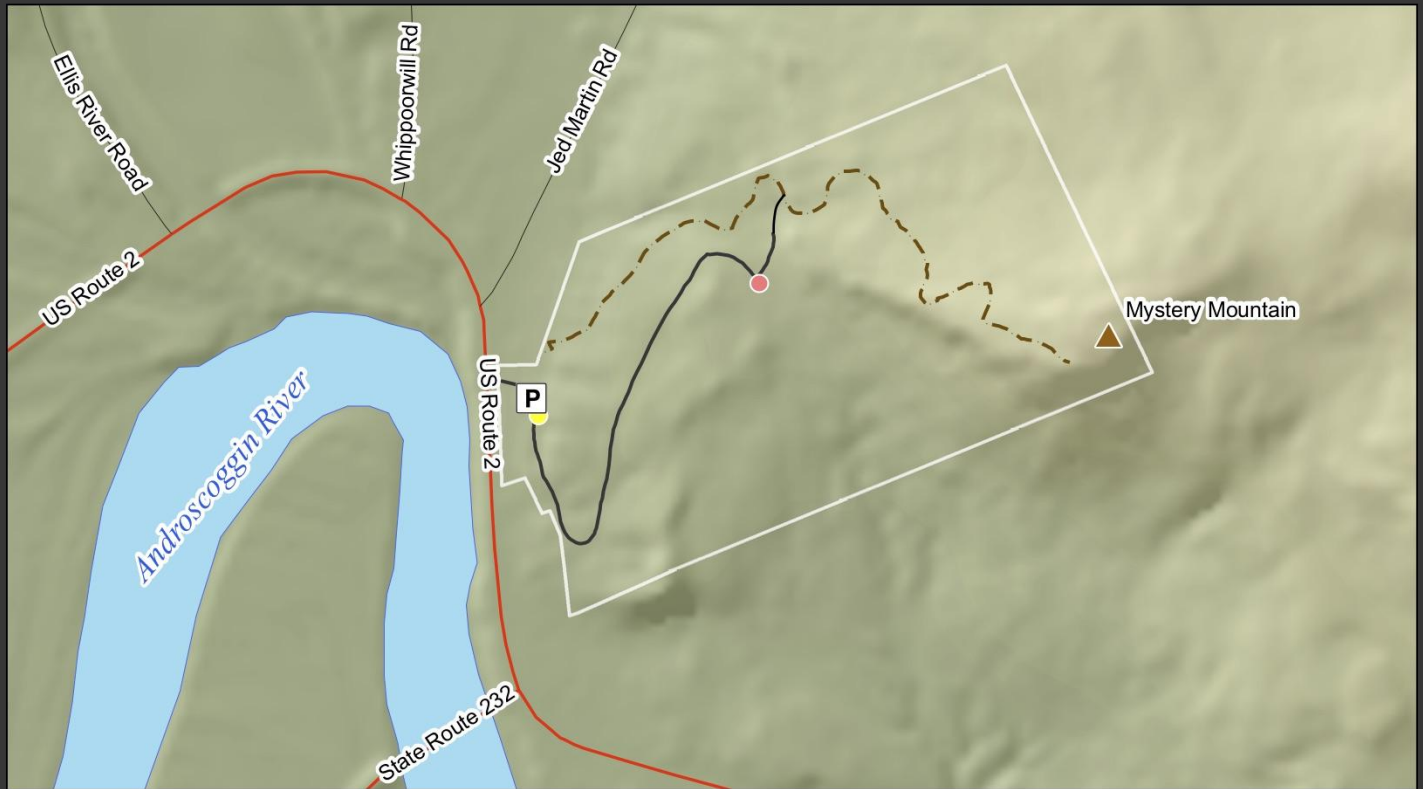
The following is the sign wayfinding numbers for this network:

<b>Sign Number</b>	<b>Sign Location</b>	<b>Sign Text</b>
MM-1	Parking lot	Authorized vehicles only
MM-2/3	Parking lot	Parking -> Trailhead <-
MM-4	Parking lot	Mystery Mountain Trail ->. Viewpoint 0.7 mi
MM-5	Driveway	Mystery Mountain Trail. 1782 Rt 2
MM-6	Top of the trail	Trail ends @ viewpoint 100 feet ^
MM-7	MM Parking lot	Sweet Fern Road ^ (all symbols)
MM-8	MM Road Crossing	Sweet Fern Road ^ Parking lot .5
MM-9	MM Road Crossing	Mystery Mountain Trail --> (boot) parking lot .3
MM-10	MM Road Crossing	Mystery Mountain Trail <-- (boot) Viewpoint .4
MM-11	Grassy meadow	Sweet Fern Road -->
MM-12	Grassy meadow	Sweet Fern Road <--

## Mystery Mountain Trail Maps



# Mystery Mountain Emergency Access Map



— Access Road



Parking



Extraction Point



Gate



0.3

— Miles

[woodsandtrails.org](http://woodsandtrails.org)  
207.200.8240